

# V TECHNOLOGY

*The Clear Choice for Those Who Want It All*

Introducing the SOLJET PRO II V series, Roland's latest innovation in advanced printers and integrated printer/cutters. With the advent of V Technology, Roland has re-engineered its award winning SOLJET wide-format line to be better than ever. V Technology adds up to the ultimate standard for printing, cutting, ink, media and RIP technology, and makes the SOLJET PRO II V series ideal for all advanced wide-format applications.



| Specifications                                | SJ-1045IS  | SJ-745EX   | SJ-645EX  |
|---|--|--|---|
| Printing method                               |  | Pico inkjet method   |   |
| Acceptable media widths                       | While the print heater is running<br>While the print heater is not running | 500 to 1879 mm (19-11/16 to 74 in.)<br>210 to 1879 mm (8-5/16 to 74 in.)   | 500 to 1625 mm (19-11/16 to 64 in.)<br>210 to 1625 mm (8-5/16 to 64 in.)  |
| Printing width                                | Maximum 2600 mm (102 3/8 in.)  | Maximum 1869 mm (73-9/16 in.)  | Maximum 1615 mm (63-9/16 in.)   |
| Ink cartridges                                | Type<br>Capacity<br>Colors   | Exclusive ECO-SOL MAX cartridge<br>220 cc or 440 cc<br>4 colors (cyan, magenta, yellow, and black) or 6 colors (cyan, magenta, yellow, black, light cyan, and light magenta)   |   |
| Printing resolution (Printing dot resolution) |  | Maximum 1440 dpi   |   |
| Distance accuracy (when printing) **2         |  | Error of less than ±0.3% of distance travelled, or 0.3 mm, whichever is greater  |   |
| Media take-up system                          | Roll outer diameter<br>Roll weight   | Maximum 250 mm (9.8 in.)<br>Maximum 100 kg (220 lb.)   | Optional (180 mm (7-1/16 in.)) **3<br>Optional (22 kg (44 lb.)) **3   |
| Media feed system                             | Roll outer diameter<br>Roll weight   | Maximum 250 mm (9.8 in.)<br>Maximum 100 kg (220 lb.)   |   |
| Heater  |  | Preheater and print heater, setting range for the preset temperature: 35 to 50 °C (96 to 122 °F) and post heater, setting range for the preset temperature: 30 to 50 °C  | Print heater, setting range for the preset temperature: 35 to 50 °C (96 to 122 °F) **4  |
| Interface                                     |  | Ethernet (10BASE-T/100BASE-TX, automatic switching)  |   |
| Power-saving function                         |  | Automatic sleep feature  |   |
| Power supply                                  | Voltage and frequency<br>Required power capacity                           | AC 200 to 240 V ±10 %, 50/60 Hz<br>10 A  | AC 117 V ±10 %, 50/60 Hz or AC 220 to 240 V ±10 %, 50/60 Hz<br>6.5 A (117 V) or 3.3 A (220 to 240 V)<br>5.8 A (117 V) or 2.7 A (220 to 240 V)   |
| Power consumption                             | During operation<br>Sleep mode   | Approx. 2400 W<br>Approx. 55 W   | Approx. 770 W<br>Approx. 640 W  |
| Acoustic noise level                          | During operation<br>During standby   |  | 65 dB (A) or less (according to ISO 7779)<br>40 dB (A) or less (according to ISO 7779)  |
| Dimensions (With stand)                       |  | 3894 (W) x 1159 (D) x 1394 (H) mm<br>(153.4 (W) x 45.7 (D) x 54.9 (H) in.)   | 3134 (W) x 742 (D) x 1300 (H) mm<br>(123-7/16 (W) x 29-1/4 (D) x 51-3/16 (H) in.)   |
| Weight (With stand)                           |  | 455 kg (1003 lb.)  | 2963 (W) x 742 (D) x 1300 (H) mm<br>(116-5/16 (W) x 29-1/4 (D) x 51-3/16 (H) in.)<br>170 kg (375 lb.)   |
| Environment                                   | Power on<br>Power off  | Temperature: 20 to 32 °C (68 to 89.6 °F), humidity: 35 to 80 % (no condensation)   | Temperature: 15 to 32 °C (59 to 89.6 °F) (20 °C (68 °F) or more recommended), humidity: 35 to 80 % (no condensation)  |
| Included items                                |  | Power cord, roll shafts, end caps, spacers, media reinforcement pipe, paper pipe, drain bottle, media gauge, media clamps, hexagonal wrenches, cap-unit tool, cleaning kit, cleaning liquid cartridges, software RIP, Roland-PrintServer CD-ROM, User's Manual, Setup Guide, Roland-PrintServer Network Settings Guide | Power cord, stand, hexagonal wrench, pipe, media flanges, flange retaining pins, drain bottle, bottle stand, transport bars, media reinforcement pipe, software RIP, user's manual, replacement blade for separating knife, Roland-PrintServer CD-ROM, Roland-PrintServer Network Settings Guide, SOL INK cleaning cartridges, cleaning kit (cleaning sticks, tweezers, wipers) |

\*\*1 Using Roland specified media, print travel of 1m, preset temperature of 25 °C (77 °F), humidity of 50% \*\*2 Not assured when the print heater is used. \*\*3 Automatic rolling function can only be used during printing.  
\*\*4 The print heater temperature may not reach the preset temperature depending on ambient conditions or the width of the media. Unevenness in temperature may be larger depending on ambient conditions or the width of the media.

| IS-1000 High Capacity Ink Delivery System |  |
|---|--|
| Cartridge slots                           | 24   |
| Ink                                       | Type<br>Colors   |
|   | Exclusive ECO-SOL MAX<br>4 colors (cyan, magenta, yellow, and black) or 6 colors (cyan, magenta, yellow, black, light cyan, and light magenta)                     |
| Power supply                              | AC adapter, Input: AC 100 V ±10 % 50/60 Hz 1.7 A, Output: DC 24 V 2.8 A  |
| Power consumption                         | Approx. 35 W   |
| Dimensions                                | 732 (W) x 445 (D) x 433 (H) mm (28-7/8 (W) x 17-9/16 (D) x 17-1/16 (H) in.) (excluding the stay)   |
| Weight                                    | 46 kg (102 lb.)  |
| Environment                               | Power on<br>Power off  |
|   | Temperature: 20 to 32 °C (68 to 89.6 °F), humidity: 35 to 80 % (no condensation)<br>Temperature: 5 to 40 °C (41 to 104 °F), humidity: 20 to 80 % (no condensation) |
| Included items                            | Dedicated AC adapter, power cord, and User's Manual  |

| Roland VersaWorks System Requirements |  |
|---------------------------------------|--|
| Operating system                      | Windows XP Service Pack 1 or later or Windows 2000 Service Pack 4 or later |
| CPU                                   | Computer with Pentium 4 2.0 GHz or faster recommended                      |
| RAM                                   | 1 GB or more recommended   |
| Free hard-disk space                  | 40 GB or more recommended  |

| Options         |                  |  |
|-----------------|------------------|--|
| ECO-SOL MEDIA   | SPVCB-1270       | PVC banner, 1270 mm x 20 m (50' x 65')   |
|                 | SVB-B-1270       | PVC banner, blackout, 1270 mm x 20 m (50' x 65')   |
|                 | SP-M-1270        | Matte PET film, 1270 mm x 30 m (50' x 98')   |
|                 | SPPLF-1300       | Backlit film, 1300 mm x 30 m (51-1/8' x 98')   |
|                 | SCM-GBMW-50-1180 | Polyethylene banner, 1180 mm x 50 m (46-7/16' x 164')  |
|                 | SCM-GPPG-50-914  | White glossy photo paper, 914 mm x 50 m (36' x 164')   |
|                 | SCM-GPPG-50-1270 | White glossy photo paper, 1270 mm x 50 m (50' x 164')  |
|                 | SCM-GVWG-40-1370 | Monomeric, calendared self adhesive vinyl white glossy-permanent adhesive, 1370 mm x 40 m (53-7/8' x 131') |
|                 | SCM-GVWG-40-1525 | Monomeric, calendared self adhesive vinyl white glossy-permanent adhesive, 1525 mm x 40 m (60' x 131')     |
|                 | ECO-SOL MAX      | ESL3-4MG   |
| ESL3-4YE        |                  | Yellow, 440 cc   |
| ESL3-4CY        |                  | Cyan, 440 cc   |
| ESL3-4BK        |                  | Black, 440 cc  |
| ESL3-4LC        |                  | Light Cyan, 440 cc   |
| ESL3-4LM        |                  | Light Magenta, 440 cc  |
| ESL3-4MG        |                  | Magenta, 220 cc  |
| ESL3-4YE        |                  | Yellow, 220 cc   |
| ESL3-4CY        |                  | Cyan, 220 cc   |
| ESL3-4BK        |                  | Black, 220 cc  |
| Cleaning liquid | SL-CL            | 1 pc.  |
|                 | TU-750           | For SJ-745EX   |
| Take-up rollers | TU-650           | For SJ-645EX   |
|                 |                  | Automatically rolls up media for unattended oversize output<br>Can only be used during printing            |

### ISO 14001 and ISO 9001:2000 Certified

Roland pursues both environmental protection and continuous quality improvement. Under the philosophy of preserving the environment and human health, Roland DG is actively working to abolish organic solvents in production, to reduce and recycle waste, to reduce power use, and to purchase recycled products. Roland DG constantly strives to provide the most highly reliable products available.



Roland reserves the right to make changes in specifications, materials or accessories without notice. Your actual output may vary. For optimum output quality, periodic maintenance to critical components may be required. Please contact your Roland dealer for details. No guarantee or warranty is implied other than expressly stated. Roland shall not be liable for any incidental or consequential damages, whether foreseeable or not, caused by defects in such products. PostScript is a trademark of Adobe Systems Incorporated. All other trademarks are the property of their respective owners.



AUTHORIZED DEALER:

Printed in Japan. RDG-90320 '06 JUL C-3 G-S

www.rolanddg.com



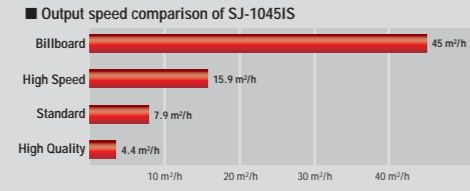
**SJ-1045IS**  
**SJ-745EX**  
**SJ-645EX**

### The Choice for Speed

First and foremost, V Technology is fast to meet the demanding requirements for banners and other advanced wide-format applications. In fact, V Technology brings to the PRO II V line an impressive 60% increase in speed when printing in the newly added 720 x 720 dpi print mode. This new print mode ensures the highest standards for precision while throughput remains quick and efficient. All of which adds up to better image quality and increased overall productivity for your business.

### The Choice for Quality

V Technology continues to produce high quality even at high speeds. In 360 x 360 dpi Billboard print mode, the SJ-1045IS will print a 103"-wide banner in 4-color CMYK at up to 45m<sup>2</sup>/h (484 sqft/h). Primary colors remain crisp and vivid. Photos and illustrations retain their sharpness.



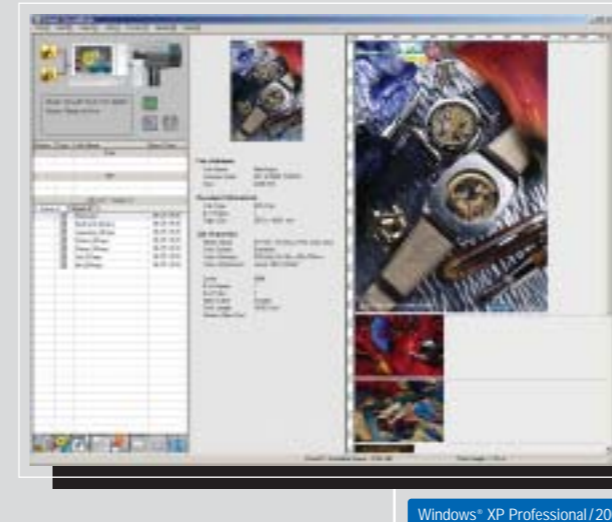
### The Choice for Unmatched Artistic Reproduction

V Technology is precise. A new 1440 x 1440 dpi Artistic print mode makes the PRO II V ideal for large reproductions of artwork and photographs. This new mode allows you to maximize Roland's acclaimed printing technology, which uses Piezo print heads and digital servomotors to precisely control droplet placement in both the print head travel and paper feed directions.



### Roland VersaWorks® — The Number One Choice for Top Professionals

V Technology features Roland VersaWorks, powerful and comprehensive software RIP designed by Roland to take full advantage of the company's award-winning inkjet technology. With advanced features including profiles for both low-priced uncoated media and quality Roland Certified ECO-SOL MAX media, VersaWorks ensures optimum performance to meet your customer's every demand. The VersaWorks Media Explorer allows you to customize settings to manage media, colors and cut paths for your SOLJET PROII V inkjet. VersaWorks is compatible with genuine Adobe® PostScript® 3™, ensuring smooth and natural gradations with 12-bit image processing to prevent tone shifts. An automatic online update feature delivers the latest VersaWorks version and profiles directly to your computer. VersaWorks is compatible with Windows XP Professional and 2000.



Automatic tiling for billboards and signs

Auto layout for managing multiple jobs

Convenient controls for adjusting the brightness and contrast of each color

Preview colors for different media or to assess color adjustments

Fully functional settings for media, colors and cutting for powerful users

Supports networking environment with two input queues for different output settings



# SOLJET PROII V

Sign Maker by Roland DG Corporation



### ECO-SOL MAX INK — The Choice for Versatile, Scratch-Resistant Performance

ECO-SOL MAX features significant new enhancements including faster drying time, improved scratch resistance, higher density, wider color gamut and performance with both coated and uncoated substrates including 150 types of low-cost uncoated media. Low-maintenance ECO-SOL MAX is virtually odorless, and does not require any special ventilation or environmental equipment. Choose ECO-SOL MAX for crisp graphics that last up to three years outdoors without lamination.\*



### The Choice for Flexibility

When it comes to media, V Technology delivers the flexibility you need for optimum performance and cost efficiency. Choose from commercially available uncoated media for excellent print quality at lower production costs. Or select Roland's genuine ECO-SOL Media for the very finest print quality, available for both outdoor and indoor applications. More than 100 ready-to-use printing profiles are available through [www.rolanddg.com](http://www.rolanddg.com) to ensure pleasing results with minimum effort.

### The Choice for Increased Productivity

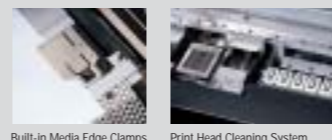
The SOLJET PRO II V Series features a powerful built-in heating system equipped with three components: a pre heater, print heater and dryer.\* When used with ECO-SOL MAX ink, this unique system offers many benefits including superior ink bonding, accelerated drying time and more vivid colors for outstanding print quality. Build your business with exceptional SOLJET performance.

\*For the SJ-745EX and SJ-645EX, the heating system includes a pre heater and a print heater.

### The Choice for Optimum Results

The PRO II V line includes a full range of additional hardware features designed to maximize performance:

- The SJ-1045IS includes the new IS-1000 high capacity ink delivery system with a total ink volume of over 10 liters and a heavy-duty media handling system.
- A newly added 3-level lever enables you to adjust print head height to accommodate media thickness ranging from canvas or banner material to fine films.
- Built-in media edge clamps prevent print defects due to media curling.
- A sheet cutter makes trimming media as easy as pushing a button.
- A media counter allows you to record and track the amount of media remaining on a roll and print this information on the media itself.
- The print head cleaning system keeps print heads in top condition for long-term use.



Media width 104"

**SJ-1045IS**  
● 104" 6-color CMYK/LcM or 4-color CMYK printer with IS-1000 high capacity ink delivery system

Media width 74"

**SJ-745EX**  
● 74" 6-color CMYK + LcM or 4-color CMYK printer

Media width 64"

**SJ-645EX**  
● 64" 6-color CMYK + LcM or 4-color CMYK printer

\*Three years outdoor durability is based on accelerated weather tests conducted by Roland DG. Results may vary depending upon location and application.